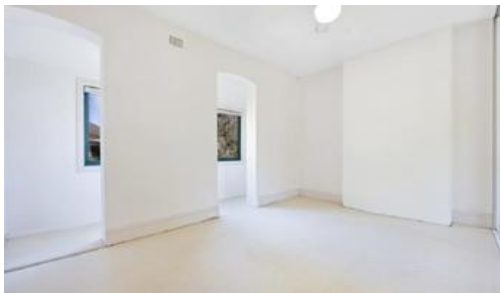


76 Birrell Street, Bondi Junction



Charming Terrace

Two storey, three bedroom private terrace with original features including elegant fireplace and detailed ceilings.

Open plan living area flows out to a spacious kitchen with dining area, continuing seamlessly into a north facing, sun drenched yard with both a grass area and paved area for entertaining.

Garaging and pet friendly.

Short stroll to Westfield Bondi Junction, trains and buses

Contact Lynette Laming now on 0411 332 336 for further details

3 bedrooms 1 bathroom 1 car space

| | |
|---------------|--------|
| Price | LEASED |
| Property Type | rental |
| Property ID | 196 |

Agent Details

Lynette Laming - +61 411 332 336

Office Details

Edgecliff
Level 5, 203-233 New South Head
Road Edgecliff NSW 2027 Australia
0411 332 336

L A M I N G P R O P E R T Y .

Disclaimer: Whilst all care has been taken to ensure accuracy in the preparation of the particulars, no warranty can be given and interested parties must make on their own enquiries.

The above information provided has been furnished to us by the vendor/s. We have not verified whether or not that information is accurate and do not have any belief in one way or the other in its accuracy. We do not accept any responsibility to any person for its accuracy and do no more than pass it on. All interested parties should make and rely upon their own inquiries in order to determine whether or not this information is in fact accurate.