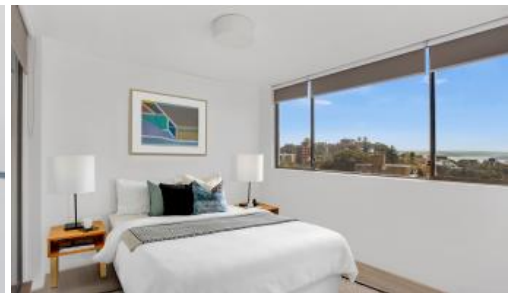




Unit 43, 22-28 Penkivil St, Bondi



Penthouse Level Apartment with Views Forever

SOLD - Opens cancelled.

Beautifully renovated, bright 2 bedroom apartment located in the heart of Bondi with views forever.

The apartment boasts a bright living area which flows gently onto the sunny balcony with views, a gorgeously renovated kitchen with subway tiles, dishwasher & timber accents, main bedroom with built-in-robe and direct access to the main balcony, 2nd bedroom with Juliette balcony and both bedrooms enjoying harbour views, modern bathroom with full bath and separate shower, additional guest powder room, large internal laundry room, a huge 2 car garage and a separate storage cage.

Positioned in the sought after "Penkivil Gardens" building in a central location, within easy access to transport, shops, famous Bondi Beach and all that Bondi Junction has to offer.

- Located on the top floor of sought after Penkivil Gardens
- Lift, level access
- Expansive views from most rooms
- Beautiful faux timber floors throughout
- Shared on-site visitors car parking
- Pets permitted subject to by-laws

🛏 2 🚶 1 🚗 2

| | |
|---------------|-------------|
| Price | SOLD |
| Property Type | Residential |
| Property ID | 324 |

Agent Details

Lynette Laming - +61 411 332 336

Office Details

Edgecliff
Level 5, 203-233 New South Head
Road Edgecliff NSW 2027 Australia
0411 332 336

L A M I N G P R O P E R T Y .

Are you thinking of selling? Phone Lynette Laming on +61 411 332 336 for 43 years of professional no obligation advice.

Disclaimer: Whilst all care has been taken to ensure accuracy in the preparation of the particulars, no warranty can be given and interested parties must rely on their own enquiries.

The above information provided has been furnished to us by the vendor/s. We have not verified whether or not that information is accurate and do not have any belief in one way or the other in its accuracy. We do not accept any responsibility to any person for its accuracy and do no more than pass it on. All interested parties should make and rely upon their own inquiries in order to determine whether or not this information is in fact accurate.